

Lawrence Road South Norwood, London

► DISABILITY

Lawrence Road has five rooms in a shared house. We offer personal care and support for five adults aged 18 to 65, who have a range of learning disabilities and physical disabilities. Residents are encouraged to develop their skills and live as independently as possible.

- Staff on-site 24 hours a day
- Long-term supported housing with care
- Integrated and mobile assistive technology

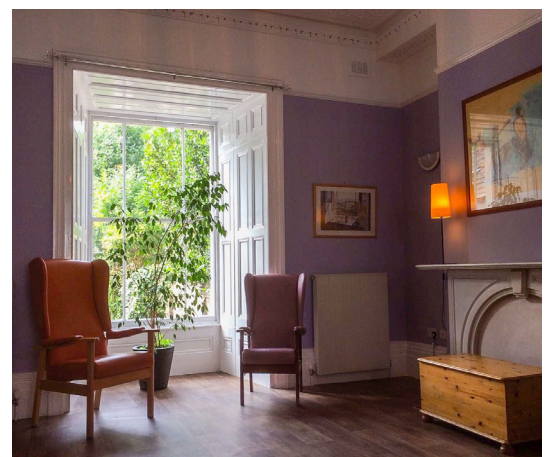
“We support people on their pathway to independence.”

Local Service Manager, Lawrence Road

About Sanctuary Supported Living

At Sanctuary Supported Living we provide supported housing, move-on accommodation, CQC registered services and floating support to help people across England on their pathway to independence.

We specialise in services for young people, homeless families and individuals, people with physical disabilities, learning disabilities and people with mental health needs.



Accommodation



Accommodation type

Five unfurnished bedrooms in a shared house.



Location

A quiet area of Norwood, near to shops, cafés, leisure facilities, South Norwood Recreation Ground and public transport links.



Communal areas

A lounge, dining room, accessible kitchen, activity room, accessible bathroom, laundry room and garden.



Technology

Personal pendant alarms are available and door sensors help residents to maintain their independence.



Safety and security

Staff office on-site and a secure door access system to ensure residents feel safe and secure.



Rental agreement type

All rooms will be let on an assured shorthold tenancy agreement.

Care and Support

Staff draw up a personalised care and support plan with residents using the Life Star model. We can provide 24-hour care and support, including personal care, depending on individual needs.

Our highly-trained staff are on-site 24 hours a day, seven days a week, giving residents peace of mind that support is always on-hand.

Residents can purchase assistive technology to further promote their independence.

Tailored support, advice and assistance includes:

- › Daily living skills
- › Maintaining a tenancy
- › Managing personal care and medication
- › Managing finances (budgeting and benefits)
- › Cooking, cleaning and shopping
- › Building positive relationships
- › Developing hobbies and interests
- › Maintaining health, safety and security
- › Signposting and accessing other services
- › Planning a successful move-on

How to apply and eligibility

To apply, complete Croyden Council's application for housing-related support. All support needs will be assessed before an application is accepted.

To be eligible for a place at Lawrence Road, applicants must:

- › Be aged 18 to 65
- › Have a learning disability or physical disability

“My family member is treated the way that makes them very happy”

Relative of resident

Contact us

Lawrence Road, South Norwood,
London SE25 5AA

0203 780 7609

Lawrence.Road@sanctuary.co.uk

www.sanctuary-supported-living.co.uk

Sanctuary Supported Living is a trading name of Sanctuary Housing Association and Sanctuary Home Care Limited, both exempt charities.

