

NORWICH HOMELESS SUPPORTED HOUSING

Norwich



We support people to live as independently as possible



At a glance

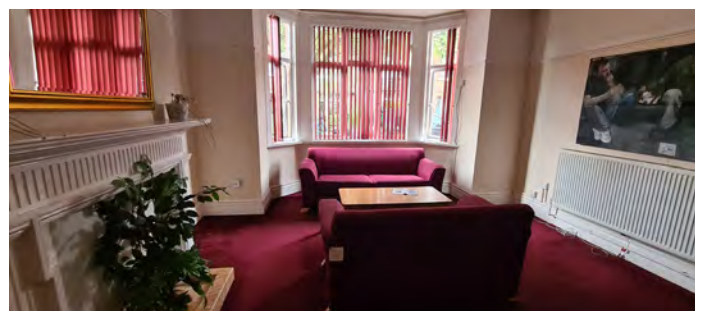
Norwich Homeless Supported Housing has six services spread across Norwich, including nine bedrooms and four flats at Aviary House, six bedrooms and five flats at College Road, nine bedrooms and two flats at Cromer Road, 11 bedrooms and two flats at Hope House, 11 bedrooms and two flats at Reepham Road and 13 bedrooms and one flat at Thorpe Road.

- Staff on-site various hours to suit residents' needs
- Short-term supported housing for up to two years
- Communal lounges, kitchens, games rooms and gardens

About Sanctuary Supported Living

At Sanctuary Supported Living we provide supported housing, move-on accommodation, CQC registered services and floating support to help people on their pathway to independence.

We specialise in services for young people, homeless families and individuals, people with physical disabilities, learning disabilities and people with mental health needs.



Accommodation

Accommodation type

59 single-occupancy hostel bedrooms and 16 one-bedroom flats.

Location

Six properties across Norwich, within walking distance of shops, restaurants, parks, and public transport links.

Communal areas

Lounges, kitchens, games rooms, laundry rooms, bathrooms and gardens.

Wi-fi

Wi-Fi is available to all residents in communal areas.

Safety and security

Staff office on-site, CCTV and a secure door access system help to ensure residents' safety and security.

Rental agreement type

All flats and bedrooms are let on a licence agreement.

Support

Staff draw up a personalised support plan with residents using the Homelessness Outcomes Star model, to help them achieve their aims and goals.

Our highly-trained staff are on-site various hours to suit residents' needs, giving residents peace of mind that support is on-hand. There is an overnight concierge service seven days a week and an out-of-hours telephone service, should residents require any further support.

Tailored support, advice and assistance includes:

- Maintaining a tenancy
- Independent living skills
- Managing finances (budgeting and benefits)
- Building confidence, resilience and self-esteem
- Developing hobbies and interests
- Dealing with correspondence
- Accessing education, training and work
- Maintaining health, safety and security
- Signposting and accessing other services
- Planning a successful move-on

How to apply and eligibility

We accept referrals from Norwich City Council and Broadland District Council.

All support needs will be assessed before an application is accepted.

To be eligible for a place at Norwich Homelessness Supported Housing, applicants must:

- Be aged 18 to 64
- Be homeless or at risk of homelessness

CONTACT US

Aviary House, 96 Aylsham Road

Norwich NR3 2HZ

0330 123 3247

Supported.Living@sanctuary-housing.co.uk



www.sanctuary-supported-living.co.uk

 Sanctuary
Supported Living