

Shaftesbury Court Trowbridge

► DISABILITY

Located in a quiet area of Trowbridge, close to Southwick Country Park, Shaftesbury Court is a residential care home, with 14 ensuite bedrooms in the main building and two adjacent bungalows. We provide long-term residential care and support for adults aged 18 to 65, who have a range of learning disabilities and physical disabilities.

- Staff on-site 24 hours a day
- Integrated and mobile assistive technology
- Fully accessible and wheelchair friendly throughout

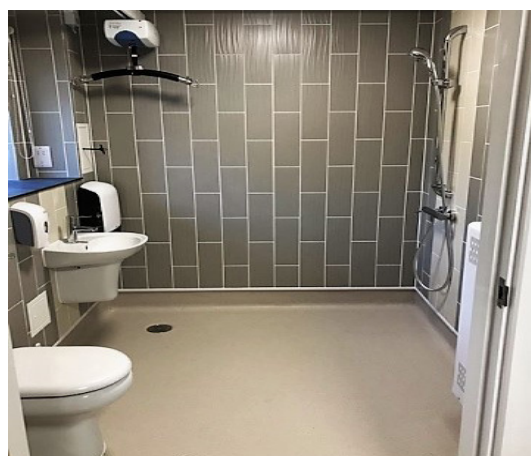
“Staff try everything they can to help people maintain their independence.”

Health and Social Care professional

About Sanctuary Supported Living

At Sanctuary Supported Living we provide supported housing, move-on accommodation, CQC registered services and floating support to help people across England on their pathway to independence.

We specialise in services for young people, homeless families and individuals, people with physical disabilities, learning disabilities and people with mental health needs.



Accommodation



Accommodation type

14 bedrooms in the main building 1 two-bedroom bungalow and 1 single bedroom bungalow. All accommodation is on the ground floor, with level access throughout the building and garden.



Technology

Communal Wi-Fi is available and technology is integrated throughout. This includes sensor-connected wheelchairs for increased independence.



Location

On the edge of Trowbridge, within walking distance of Southwick Country Park, as well as shops, supermarkets, restaurants, public transport links and two adapted onsite vehicles.



Safety and security

Staff office on-site and a secure door access system to ensure residents' safety and security.



Features

Accessible kitchen with rise and fall units, en-suite wet rooms fitted with track and hoist system. Fully adapted bathroom with an accessible bath.

Care and support

Staff draw up a personalised care and support plan with residents using the Life Star model. We can provide 24-hour residential care and support, including personal care, depending on individual needs. Our highly-trained staff are on-site 24 hours a day, giving peace of mind that support is always on-hand.

Tailored support, advice and assistance includes:

- › Daily living skills
- › Managing personal care and medication
- › Positive behaviour management
- › Managing finances (budgeting and benefits)
- › Cooking, cleaning and shopping
- › Monthly resident wellbeing meetings
- › Developing hobbies and interests
- › Maintaining health, nutrition and security
- › Signposting and accessing other service
- › Planning a successful move-on

Assistive technology has been installed throughout and is designed to maximise independence and meet individual needs. The system allows residents to use a variety of personalised controls on their wheelchairs, depending on their physical abilities and preferences, such as push pads, rolling wheels or squeezers, to operate equipment and devices in their rooms.

How to apply and eligibility

To apply directly, please contact us and ask for an application form. We also accept referrals from Wiltshire County Council. All care and support needs will be assessed before an application is accepted.

To be eligible for a place at Shaftesbury Court, all applicants must:

- › Be aged 18 to 65
- › Have a learning disability or physical disability as their primary care need
- › Require a high level of care and support

Contact us

Shaftesbury Court, Manor Close
Trowbridge BA14 9HN

01225 760 228

Manor.Close@sanctuary.co.uk

www.sanctuary-supported-living.co.uk

Sanctuary Supported Living is a trading name of Sanctuary Housing Association and Sanctuary Home Care Limited, both exempt charities.

